



AIR HAMMERS, CHISELS HAMMERS, MALLETS PLUGS & FEATHERS



CUTURI AIR BOTTLES

EUROPE'S MOST POPULAR BOTTLE

ITEM CODE
 BAVCUHAMR
 BAVCUHAMS
 BAVCUHAMT
 BAVCUHAMU



TYPE U T S R Z

BAVARIA PISTOL HAMMERS

SIZE	ITEM CODE
GS45/F-Lettering Hammer/Grey	BAV404510
GS50—Light Chiseling Hammer/Green	BAV415010

GS45/F-All purpose soft-starting hammer for V-cut lettering & sculpting work.

GS50-Operating light flat & pointed chisels, bush hammering of the ground of raised characters ,edging etc.



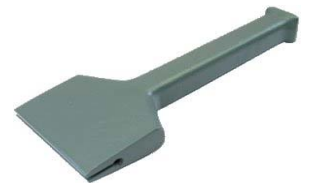
ELECTROPLATED SHARPENING BLOCK - FOR CHISELS

SIZE	ITEM CODE
120 - COARSE	DP0120FTS
200 - MEDIUM	DP0200FTS
252 - EX COARSE	DP0252FTS
400 - FINE	DP0400FTS



CLEAVING INSERT HOLDER

SIZE	ITEM CODE
50mm	BAV330405



PLUGS & FEATHERS

SIZE	ITEM CODE
18mm 150mm L	BAV381800
22mm 150mm L	BAV382200



CARBIDE PNEUMATIC BUSH HAMMER

SIZE	TEETH	ITEM CODE
14x14mm	2x2	BAV260222
30x30mm	3x3	BAV260809



CARBIDE LETTERING CHISELS

SIZE	ITEM CODE
4mm HH	BAV108104
8mm HH	BAV108108
12mm HH	BAV108112
16mm HH	BAV108116
20mm HH	BAV108120
4mm MH	BAV108204
8mm MH	BAV108208
12mm MH	BAV108212
16mm MH	BAV108216
20mm MH	BAV108220



CARBIDE CARVING CHISELS

SIZE	ITEM CODE
4mm HH	BAV101204
8mm HH	BAV101208
12mm HH	BAV101212
16mm HH	BAV101216
20mm HH	BAV101220
4mm MH	BAV101104
6mm MH	BAV101106
8mm MH	BAV101108
10mm MH	BAV101110
12mm MH	BAV101112
16mm MH	BAV101116
20mm MH	BAV101120



CARBIDE POINT

SIZE	ITEM CODE
24x24mm HH	BAV110124
20x20mm MH	BAV110220



CARBIDE CHISELS

SIZE	ITEM CODE
25mm HH	BAV120125
30mm HH	BAV120130
40mm HH	BAV120140
20mm MH	BAV120220
25mm MH	BAV120225
30mm MH	BAV120230
40mm MH	BAV120240



CARBIDE PITCHER

SIZE	ITEM CODE
30mm	BAV145130
50mm	BAV145150
60mm	BAV145160



CARBIDE CLAW CHISELS

SIZE	ITEM CODE
14mm MH	BAV140143
18mm MH	BAV140184
20mm MH	BAV140203
26mm MH	BAV140264
32mm MH	BAV140325
38mm MH	BAV140386



CARBIDE PNEUMATIC CLAW CHISELS

SIZE	ITEM CODE
18mm 4pt	BAV240184



CARBIDE CARVING

SIZE	ITEM CODE
10x10mm MH	BAV111110



CARBIDE PUNCH

SIZE	ITEM CODE
18x18mm HH	BAV112118
24x24mm HH	BAV112124



CARBIDE SPLITTING TOOL

SIZE	ITEM CODE
80MM HH	BAV125180



CARBIDE MARK SCRAPER

SIZE	ITEM CODE
160MM LONG	BAV150100



CARBIDE PNEUMATIC CHISELS - LIGHT

SIZE	ITEM CODE
12MM	BAV220112
25MM	BAV220125



WOODEN MALLET

SIZE	ITEM CODE
100mm ø	BAV620010
130mm ø	BAV620013



SYNTHETIC MALLET

SIZE	ITEM CODE
80mm ø	BAV621080
130mm ø	BAV621130



IRON MALLET

SIZE	ITEM CODE
500g	BAV623050
1000g	BAV623100



RIFFLING HAMMER

SIZE	ITEM CODE
30 X 30 MM	BAV173054



CARBIDE SCORING HAMMER

SIZE	ITEM CODE
30MM	BAV175030



CARBIDE SPLITTING HAMMER

SIZE	ITEM CODE
60MM 4KG	BAV175540



CURVED MASONS CLUB

SIZE	ITEM CODE
35X35MM 750G	BAV330007



STONE SPLITTING HAMMER

SIZE	ITEM CODE
2KG	BAV353020

